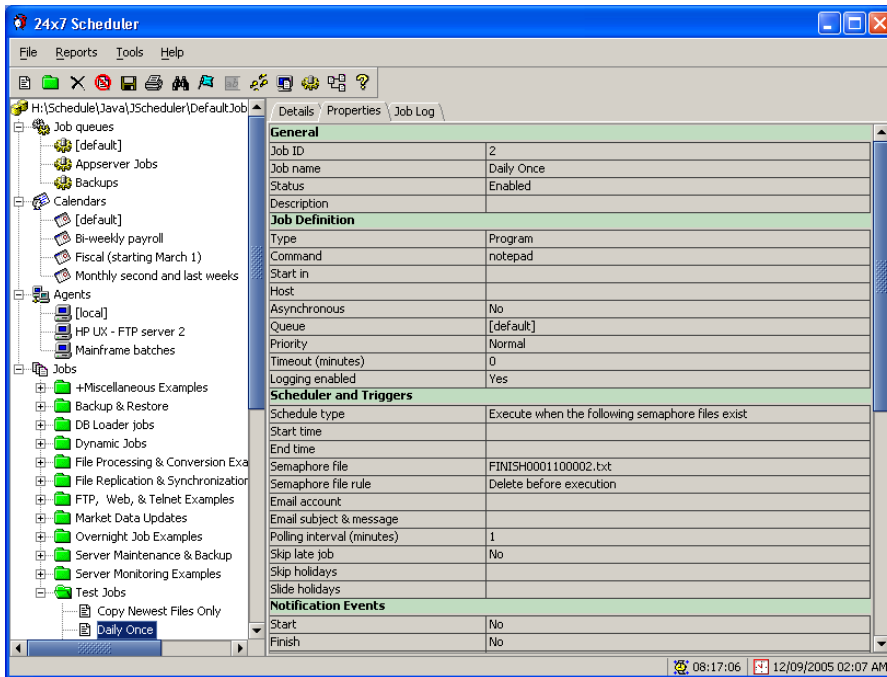


24x7 Automation Suite is a robust and scalable job scheduling and automation solution. 24x7 integrates all essential components required for automating virtually any computer processing task. Designed to scale for any environment, 24x7 provides tools and methods for both designing robust and reliable business solutions and seamlessly deploying them across your enterprise from a centralized administration console. This all-in-one package can be used to streamline work flows, dramatically improving the automation and monitoring of business processes throughout the enterprise.

Job Scheduling as a Business Imperative

Technology has become a vital cog in keeping the business wheel spinning smoothly. Yet business imperatives are constantly changing in response to market pressures, placing enormous stress on IT support systems to respond and evolve as needed. Central to optimizing business agility is the need for reliable and timely information processing on virtually any platform while remaining in sync with mission-critical applications. Enabling such an environment requires a highly scalable and flexible job scheduling and automation solution capable of responding to real-time business needs while at the same time seamlessly integrating with business processes and adapting to the infrastructure as it changes.



Enterprises no longer view the automation of business processes as a tactical requirement, but as a critical asset in advancing strategic objectives – improved productivity, deeper business-to-business collaboration, and enhanced customer relationships. Our customers view 24x7 Automation Suite as an integral part of the business process, enabling them to operate more efficiently, effectively, and profitably.

Key Features at a Glance

- Flexible scheduling using a wide variety of job triggers: time-based; file-based; process-based, email-based; system event-based; user-defined scriptable triggers
- Multiple parallel job queues
- Local, remote, and distributed jobs support
- Integrated event management
- Advanced system and application event monitoring
- Complete job logging and auditing
- Automatic error notifications (email/page/network/database/file/script)
- Job performance monitoring and reporting
- Support for complex job dependencies across platforms
- Workload balancing
- Single point of control
- Multi-platform support
- Job flow modeling and simulation
- Fault tolerance and failover
- Role-based administration
- Full-featured graphical, console-based, and web-based interfaces
- Multiple APIs for integrating with other back-end systems

24x7 Automation Suite from SoftTree Technologies, Inc. provides the most complete suite of automation tools available for Windows 9x/Me/NT/2000/XP/2003. It also includes automation servers for Linux, Sun Solaris, IBM AIX, z/OS, OS/390, FreeBSD, Digital UNIX, Tru64 UNIX, and other UNIX platforms. The tools can be used to automate nearly any computer process you can think of. 24x7 Automation Suite directly supports Visual Basic Script, Job Automation Language, SQL, HTTP, FTP, DDE, RAS, Telnet, email functions, file replication and monitoring via network, FTP, and remote agents, bulk-file operations, Windows NT services, job debugging and profiling, event logging and auditing, real-time job monitoring and reporting.

Cross-Platform Support

The 24x7 Automation Suite supports Windows, Linux and Unix; delivering a new era in cross-platform task automation. If you are a system administrator, system integrator, developer or manager, you need an automation tool kit that supports virtually any networking protocol and can reside on any available platform. 24x7 Automation Suite provides the tools and agent technology you need to extend job scheduling to remote platforms in a heterogeneous environment.

Cross-Platform Job Management

24x7 Automation Suite is an integrated solution that coordinates and executes job schedules across a wide variety of distributed platforms. Functions such as administration, job submission and job monitoring can be centralized or distributed depending on the need within your organization. 24x7's intuitive Web consoles simplify the potentially complex nature of enterprise scheduling. Its industrial strength fault tolerance and recoverability help maintain business continuity and meet service levels.

24x7 Automation Suite is the most sophisticated job scheduling and process automation suite available today.

- **Flexible Job Automation** – Comprehensive automation based on program and document type jobs; database jobs (scheduled commands, stored procedures, etc...); and script type jobs for advanced control. Job starting conditions based on calendar event and/or file status.
- **Event-based Job Control** – Jobs can be triggered using a wide variety of job triggers: time-based; file-based; process-based, email-based; system event-based; and user-defined scriptable triggers.
- **Multiple Concurrent Job Queues** – Enables you to run more jobs, significantly improving performance.
- **Fault Tolerance and Recovery** – Master/Standby Scheduler mode provides absolute reliability with automatic fail-over both at the job and system level.
- **Automated Error Recovery** - Automatic error and status notifications via (email/page/network/database/file/script)
- **Built-in JAL** (Job Automation Language) script engine, editor and debugger
- **Built-in VBScript** (Visual Basic Script) script engine, editor and debugger
- **Built-in Automation Clients** – FTP, Secure FTP, SSH, HTTP, MAPI, SMTP, Lotus Notes, DDE, SQL (native database drivers for all major database systems and ODBC included), RAS.
- **Built-in File Processing Engine** - (over 100 methods varying from simply file copy, to bulk-file search & replace, file comparison and much more...)
- **Built-in File Replication Engine** - (for replicating and synchronize files and directories over network, over FTP connection, over TCP/IP or Named Pipes connections.
- **Robust API Support** - Enables easy integration with your other business applications (Java, COM, DDE, command line interface)
- **Real-Time Monitoring** – View job status, dependencies and history in real-time through HTML status reports.

